

OBJECTIVES

- Review the importance of reading physiological factors and the infant's behaviors to promote positive feeding experiences.
- Describe ways to improve success when feeding human milk to preterm infants.
- Describe the essential elements of a post-discharge feeding plan in the term, late preterm and preterm infant.

FOR ADDITIONAL INFORMATION, PLEASE CONTACT:

Katie Roche
Katie.Roche@abbott.com

Alexandra Mattiola
alexandra.mattiola@abbott.com

For registration questions, contact
The Curry Rockefeller Group, LLC
(866) 320-5806

REGISTRATION

(ONLINE ONLY)

TO REGISTER ONLINE, PLEASE VISIT:

<https://beacon360.content.online/xbcs/S2062/catalog/product.xhtml?eid=56655>

RN: 4 CE_s

RD: 4 CPEU_s

TUITION: \$15
PAYMENT ACCEPTED VIA CREDIT CARD OR DEBIT CARD FOR A FULL REFUND, CANCELLATIONS MUST BE MADE 1 WEEK PRIOR TO THE PROGRAM DATE.

WHO SHOULD ATTEND:

Advanced Practice Nurses, Clinical Nurse Specialists, Clinical Nutrition Managers, Lactation Consultants, Mother-Baby Nurses, Neonatal Registered Dietitians, Neonatal/Nursery Nurses, Neonatal Nurse Practitioners, Nurse Educators, Registered Dietitians, Registered Nurses, Labor and Delivery Nurses



SPECIAL CONSIDERATIONS IN NUTRITION AND FEEDING IN THE PRETERM INFANT

THURSDAY, MAY 9, 2024
9:00 AM – 2:00 PM EDT

LOCATION:

Maggiano's Restaurant
160 N. Gulph Road
King of Prussia, PA 19406-2937

SPEAKERS

Sharon Groh-Wargo, PhD, RD
Andrea Mangino, MS, CCC-SLP

THIS PROGRAM QUALIFIES FOR:
4 CE_s FOR REGISTERED NURSES
4 CPEU_s FOR REGISTERED DIETITIANS

Abbott Nutrition Health Institute is approved by the California Board of Registered Nursing, Provider #CEP 11213.



Abbott Nutrition Health Institute is a Continuing Professional Education (CPE) Accredited Provider with the Commission on Dietetic Registration (CDR). CDR Credentialed Practitioners will receive Continuing Professional Education Units (CPEUs) for completion of these activities/materials.



www.anhi.org
©2020 Abbott Laboratories
20203010/February 2020 LITHO IN USA



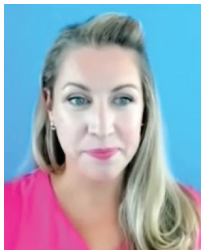
SPECIAL CONSIDERATIONS IN NUTRITION AND FEEDING IN THE PRETERM INFANT

OUR SPEAKERS



Sharon Groh-Wargo
PhD, RD

Dr. Groh-Wargo has over 40 years of experience as a neonatal dietitian, is a nationally known speaker and researcher, and has authored numerous publications on neonatal nutrition. She is a contributor to all three editions of the Academy of Nutrition and Dietetics' *Pocket Guide to Neonatal Nutrition* and authored a chapter on "Lactoengineering" for the 3rd edition of *Infant and Pediatric Feedings: Guidelines for Preparation of Human Milk and Formula in Health Care Facilities*. She participated in the *BEGIN Project – Breastmilk Ecology: Genesis of Infant Nutrition* - sponsored by the NIH in cooperation with the Academy of Nutrition and Dietetics, which was convened to investigate human milk as a unique biological system. Dr. Groh-Wargo received the Academy of Nutrition and Dietetics' Medallion Award in recognition of her professional contributions.



Andrea Mangino
MS, CCC-SLP

Andrea Mangino is the Manager of Pediatric Speech-Language Pathology at Cohen Children's Medical Center and LIJ Hearing and Speech Center. While there, she developed and continues to improve the pediatric inpatient and outpatient feeding and swallowing program. Andrea is a Pediatric Specialist in feeding and swallowing disorders with advanced training in clinical/instrumental assessment and management of infant and pediatric dysphagia. She is recognized as an expert in swallowing/feeding across the continuum of pediatric settings, including neonates, medically fragile infants, and children with a tracheostomy. Andrea provides lectures on topics including neonatal and pediatric dysphagia, and feeding in the NICU, as well as related topics including speech and swallowing for patients with craniofacial anomalies.

8:30AM-9:00AM	REGISTRATION/BREAKFAST
9:00AM-10:15AM	Cue-Based Feedings in the NICU and Beyond Andrea Mangino, MS, CCC-SLP
10:15AM-10:30AM	BREAK
10:30AM-11:45AM	Optimizing Human Milk Feeding in the Preterm Infant Sharon Groh-Wargo, PhD, RD
11:45AM-12:30PM	LUNCH
12:30PM-1:45PM	Neonatal Nutrition at Hospital Discharge Across the Gestational Age Spectrum Sharon Groh-Wargo, PhD, RD
1:45PM-2:00PM	Q&A/ADJOURN
<p>In addition to completing an online evaluation, participants of our programs can provide feedback directly to CDR at www.cdrnet.org.</p>	