

## PROGRAM OBJECTIVES

### AFTER ATTENDING THIS CONFERENCE, PARTICIPANTS WILL BE BETTER ABLE TO:

- Explain current trends in nutritional care for the healthy term infant.
- Define the types of perinatal anxiety disorders and identify treatment options.
- Discuss specific needs for diverse families and review communication techniques to provide objective and individualized maternity care to all families.
- Identify feeding readiness cues and signs of disengagement in the preterm infant and list at least 2 strategies to facilitate improved oral feeding.
- Describe how feeding protocols, probiotics and the provision of human milk can decrease the incidence of NEC.
- Describe the essential elements of a post discharge feeding plan and promote breastfeeding in the preterm infant.

### FOR ADDITIONAL INFORMATION, PLEASE CONTACT:

Kerry Witt:  
[Kerry.Witt@abbott.com](mailto:Kerry.Witt@abbott.com)

Kathleen Grant:  
[Kathleen.Grant@abbott.com](mailto:Kathleen.Grant@abbott.com)

For registration questions, contact  
The Curry Rockefeller Group, LLC  
(866) 320-5806

## REGISTRATION (ONLINE ONLY)

### REGISTER ONLINE, PLEASE VISIT:

<https://beacon360.content.online/xbcs/S2062/catalog/product.xhtml?eid=46856>

**RN: 6.5 CE<sub>s</sub>**

**RD: 6.5 CPEU<sub>s</sub>**

**TUITION: \$35**  
**PAYMENT ACCEPTED VIA CREDIT CARD OR DEBIT CARD FOR A FULL REFUND, CANCELLATIONS MUST BE MADE 1 WEEK PRIOR TO THE PROGRAM DATE.**

### WHO SHOULD ATTEND:

Advanced Practice Nurses, Clinical Nurse Specialists, Clinical Nutrition Managers, Lactation Consultants, Mother-Baby Nurses, Neonatal Registered Dietitians, Neonatal/Nursery Nurses, Neonatal Nurse Practitioners, Nurse Educators, Registered Dietitians, Registered Nurses, Labor and Delivery Nurses



## NYC 2023: CONFRONTING CLINICAL AND PROFESSIONAL CHALLENGES IN NEONATAL AND INFANT CARE

**THURSDAY, APRIL 20, 2023**  
**8:00 AM - 4:00 PM ET**

**LOCATION:**  
New York Hilton Midtown  
1335 6th Ave, New York, NY 10019

**SPEAKERS**  
Sharon Groh-Wargo, PhD, RD  
Bonnie Gahn, MSN, MA, APRN  
Andrea Mangino, MS, CCC-SLP  
Lyssa Lamport, DCN (c), MS, RD

**PRE-REGISTRATION REQUIRED**

**THIS PROGRAM QUALIFIES FOR:**  
**6.5 CES FOR REGISTERED NURSES**  
**6.5 CPEUS FOR REGISTERED DIETITIANS**

Abbott Nutrition Health Institute is approved by the California Board of Registered Nursing, Provider #CEP 11213.



Abbott Nutrition Health Institute is a Continuing Professional Education (CPE) Accredited Provider with the Commission on Dietetic Registration (CDR). CDR Credentialed Practitioners will receive Continuing Professional Education Units (CPEUs) for completion of these activities/materials.



www.anhi.org  
©2020 Abbott Laboratories  
20203010/February 2020 LITHO IN USA



# NYC 2023: CONFRONTING CLINICAL AND PROFESSIONAL CHALLENGES IN NEONATAL AND INFANT CARE

## OUR SPEAKERS



### Sharon Groh-Wargo

PhD, RD

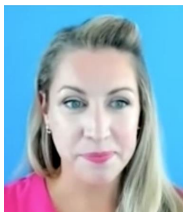
Sharon Groh-Wargo PhD, RDN is Professor of Nutrition and Pediatrics, at Case Western Reserve University School of Medicine in Cleveland, Ohio. Dr. Groh-Wargo has over 40 years of experience, is a nationally known speaker and researcher, and has authored numerous publications on neonatal nutrition. She is a contributor to all three editions of the Academy of Nutrition and Dietetics' Pocket Guide to Neonatal Nutrition and authored a chapter on "Lactoengineering" for the 3rd edition "Infant and Pediatric Feedings: Guidelines for Preparation of Human Milk and Formula in Health Care Facilities". She participates in the BEGIN Project – Breastmilk Ecology: Genesis of Infant Nutrition - sponsored by the NIH in cooperation with the Academy of Nutrition and Dietetics, which was convened to investigate human milk as a unique biological system. Dr. Groh-Wargo received the Academy of Nutrition and Dietetics' Medallion Award in recognition of her professional contributions



### Bonnie F. Gahn

MSN, MA, APRN

Bonnie recently retired from the position of Manager of Nursing Education for the Abbott Nutrition Health Institute. However, she continues to work as an educational consultant with ANHI. She also maintains an Adjunct Professor position at The Ohio State University College of Nursing. She has over 35 years of experience in clinical, clinical research, educational and administrative positions within nursing. Her passion is in the NICU and her presentations combine evidence-based research with practical application. She lectures across the country on neonatal clinical topics and professional development topics such as effective communication and intergenerational teams.



### Andrea Mangino

MS, CCC-SLP

Andrea Mangino is the Manager of Pediatric Speech-Language Pathology at Cohen Children's Medical Center and LIJ Hearing and Speech Center. While there, she developed and continues to improve the pediatric inpatient and outpatient feeding and swallowing program. Andrea is a Pediatric Specialist in feeding and swallowing disorders with advanced training in clinical/instrumental assessment and management of infant and pediatric dysphagia. She is recognized as an expert in swallowing/feeding across the continuum of pediatric settings, including neonates, medically fragile

infants, and children with a tracheostomy. Andrea provides lectures on topics including neonatal and pediatric dysphagia, and feeding in the NICU, as well as related topics including speech and swallowing for patients with craniofacial anomalies.



### Lyssa Lamport

DCN (c), MS, RD

Lyssa Lamport is the Neonatal Nutritionist at Cohen Children's Medical Center of New York. Although based out of Cohen Children's Medical Center, she serves as a consulting nutritionist for some of their outlying NICU's as well as the coordinator of their Neonatal Malnutrition Team and the Neonatal Intestinal Rehabilitation Team. Along with the lactation team she assisted in developing their human milk nutrition room. She has participated in numerous nutrition related studies including trials of Omegaven, SMOF, Proacta, and the Abbott head-to-head human milk fortifier trial. She has also conducted her own research looking at neonatal refeeding syndrome, post-discharge outcomes of using human milk fortifier, ferritin approach to timing and dosing iron supplementation, osmolality feeding safety, the impact of pulmonary hypertension on growth and obstetrician knowledge of the nutritional impact of gastric bypass on pregnancy and supplementary iron needs of preterm infants. She has also served as one of the reviewers of the first American Academy of Nutrition and Dietetics Neonatal Nutrition Handbook.

7:30AM-8:00AM	REGISTRATION/BREAKFAST
8:00AM-9:00AM	Recent Trends in the Nutritional Care of Healthy Term Infants Sharon Groh-Wargo, PhD, RD
9:00AM-9:15AM	BREAK
9:15PM-10:15AM	Perinatal Anxiety Disorder: Impact on Mom, Baby and Family Bonnie F. Gahn, MSN, MA, APRN
10:15AM-11:15AM	Every Family is Unique: Diversity in Maternal Child Healthcare Sharon Groh-Wargo, PhD, RD and Bonnie F. Gahn, MSN, MA, APRN
11:15AM-11:30AM	Q&A
11:30AM-12:30PM	LUNCH
12:30PM-1:30PM	Strategies for Development of Safe Oral Feeding Among Preterm Infants Andrea Mangino, MS, CCC-SL
1:30PM-1:45PM	BREAK
1:45PM-2:45PM	Protection against NEC with the 3 P's Sharon Groh-Wargo, PhD, RD
2:45PM-3:45PM	Discharge Feeding Strategies for the Preterm infant Lyssa Lamport, DCN (c), MS, RDN
3:45PM-4:00PM	Q&A/ADJOURN

In addition to completing an online evaluation, participants of our programs can provide feedback directly to CDR at [www.cdrnet.org](http://www.cdrnet.org).