



ANHI
ABBOTT NUTRITION
HEALTH INSTITUTE



WEBINAR: NUTRITION & IMMUNE HEALTH FOR GOING BACK TO SCHOOL

DATE: Tuesday, 15 September

TIME: 10 AM ET

In this webinar, Ana M. Avalos Mishaan, MD, and Robert Murray, MD, will discuss nutrition requirements and considerations to support immune health of school-age children and proper nutrition to support recovery in a child that becomes ill.

FREE continuing education: 1.0 RN CE; 1.0 RD CPEU

[REGISTER](#)



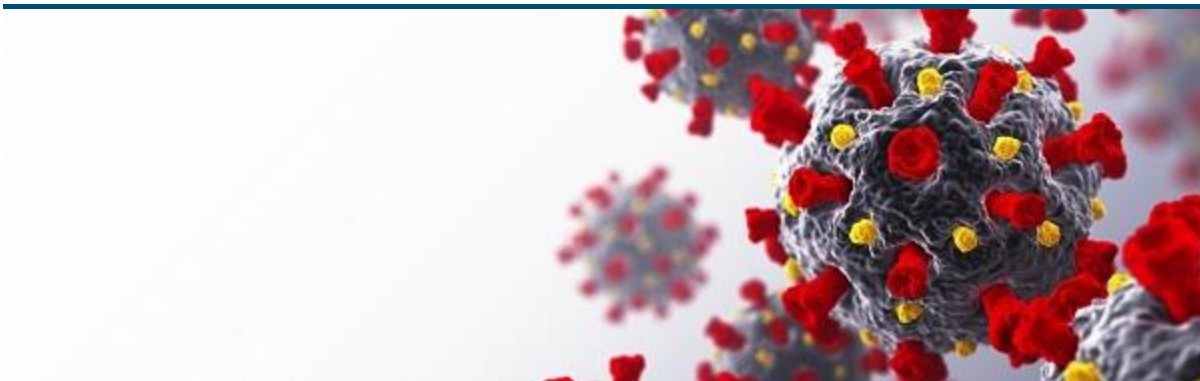
VIDEO SERIES: FINDING & DIAGNOSING SARCOPENIA

In 2018, the European Working Group on Sarcopenia in Older People (EWGSOP2) met a second time to update their definition on sarcopenia.

In this series we investigate the four steps of the EWDSOP2 clinical algorithm used to help find and diagnose cases of sarcopenia: FIND, ASSESS, CONFIRM and SEVERITY.

WANT MORE DETAILS? [This infographic](#) offers a visualization of displays the four steps of the EWDSOP2 clinical algorithm used to help find and diagnose cases of sarcopenia in an easy-to-view format.

[WATCH VIDEO SERIES](#)



NUTRITION & IMMUNITY: COVID-19 RESOURCES

We've bundled together all the Covid-19 on-demand webinars, podcasts, self-study courses and infographics we've created over the past five months to help you help your staff, patients and their families navigate, manage and address the virus.

[SEE RESOURCES](#)



PODCAST: CHILDHOOD COGNITION - THE BENEFITS OF HYDRATION & NUTRITION

In this 19:27-minute podcast, Naiman Khan, PhD, RD, discusses a range of topics including how fluid status and nutrition can affect the body at large, and the brain specifically. And he'll share the results of his recent investigation into how hydration and nutrition impact cognitive performance.

[HEAR PODCAST](#)



SELF-STUDY: PATIENT CARE IN THE NICU SERIES

This program series was developed by Medcom, Inc. Each course offers **0.5 RN CE of FREE Continuing Education**.

DISCHARGE PLANNING FOR THE NICU PATIENT - Identify appropriate measures and equipment to address the nutritional discharge needs of a baby discharged from the NICU; and more.

[ENROLL](#)

GESTATIONAL ISSUES THAT AFFECT THE FETUS - In this course, you'll describe how Rh-negative disease develops and whether the condition may require admission to the NICU; explain the screening process related to gestational diabetes; and more.

[ENROLL](#)

PATHOLOGIES IN THE NICU: IDENTIFICATION AND MANAGEMENT - In this course, you'll describe the most common respiratory pathologies seen in the NICU; outline the purpose and nature of ECMO; and more.

[ENROLL](#)

COMPLICATIONS DURING AND IMMEDIATELY AFTER DELIVERY - In this course, you'll review the immediate interventions that may be required for the compromised newborn; outline the common airway/breathing and cardiovascular interventions for premature infants; and more.

[ENROLL](#)

ONGOING CARE OF THE COMPROMISED INFANT - In this course, you'll define persistent pulmonary hypertension of the newborn, pneumothorax, acidosis, hypotension and hypoglycemia; explain the complications and subsequent interventions recommended for feeding difficulties in the newborn; and more.

[ENROLL](#)

DEATH OF A NEONATE - In this course, you'll describe the decision-making process involved in life-saving interventions and when such measures should be suspended; identify steps that should be taken to provide the family appropriate support; and more.

[ENROLL](#)



SELF-STUDY: ENHANCING PEDIATRIC & ADOLESCENT DIABETES CARE

In this course, “**Enhancing Pediatric & Adolescent Diabetes Care Through the Use of Continuous Glucose Monitoring & Ambulatory Glucose Profiles,**” David Maahs, MD, PHD, and Fiona Campbell, MD, MBCHB, MRCP, FRCPC, DCH, compare the differences and similarities in pediatric glycemic outcomes across regions of the world; discuss key elements of initiatives to improve outcomes and quality of diabetes care; and assess the value of ambulatory glucose profiles and continuous glucose monitoring to improve glycemic outcomes. Originally presented at the 45th Annual International Society for Pediatric and Adolescent Diabetes Conference.

FREE continuing education: 1.0 RN CE; 1.0 RD CPEU

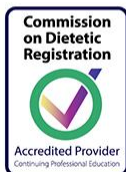
[ENROLL](#)

BE PART OF THE ANHI COMMUNITY

[EXPLORE](#)

Like this newsletter? Forward to your colleagues and let them know they can [subscribe here](#).

Abbott Nutrition Health Institute is an approved provider of continuing nursing education by the California Board of Registered Nursing Provider #CEP 11213.



Abbott Nutrition Health Institute is a Continuing Professional Education (CPE) Accredited Provider with the Commission on Dietetic Registration (CDR). CDR Credentialed Practitioners will receive Continuing Professional Education Units (CPEUs) for completion of these activities/materials.

<u>ABBOTT</u>	<u>EDUCATION</u>	<u>SITE MAP</u>	<u>ABBOTT GLOBAL</u>	<u>LINKEDIN</u>
	<u>CONFERENCES</u>	<u>CONTACT US</u>	<u>ABBOTT NUTRITION</u>	
	<u>RESOURCES</u>	<u>PRIVACY POLICY</u>	<u>MQII</u>	
	<u>GRANTS</u>	<u>TERMS OF USE</u>	<u>ANHI COMMUNITY</u>	
		<u>NEWSROOM</u>	<u>UNSUBSCRIBE</u>	

© 2020 Abbott. All rights reserved.
Please read the Legal Notice for further details.

Unless otherwise specified, all product and service names appearing in this newsletter are trademarks owned by or licensed to Abbott, its subsidiaries or affiliates. No use of any Abbott trademark, trade name, or trade dress in this site may be made without prior written authorization of Abbott, except to identify the product or services of the company.